

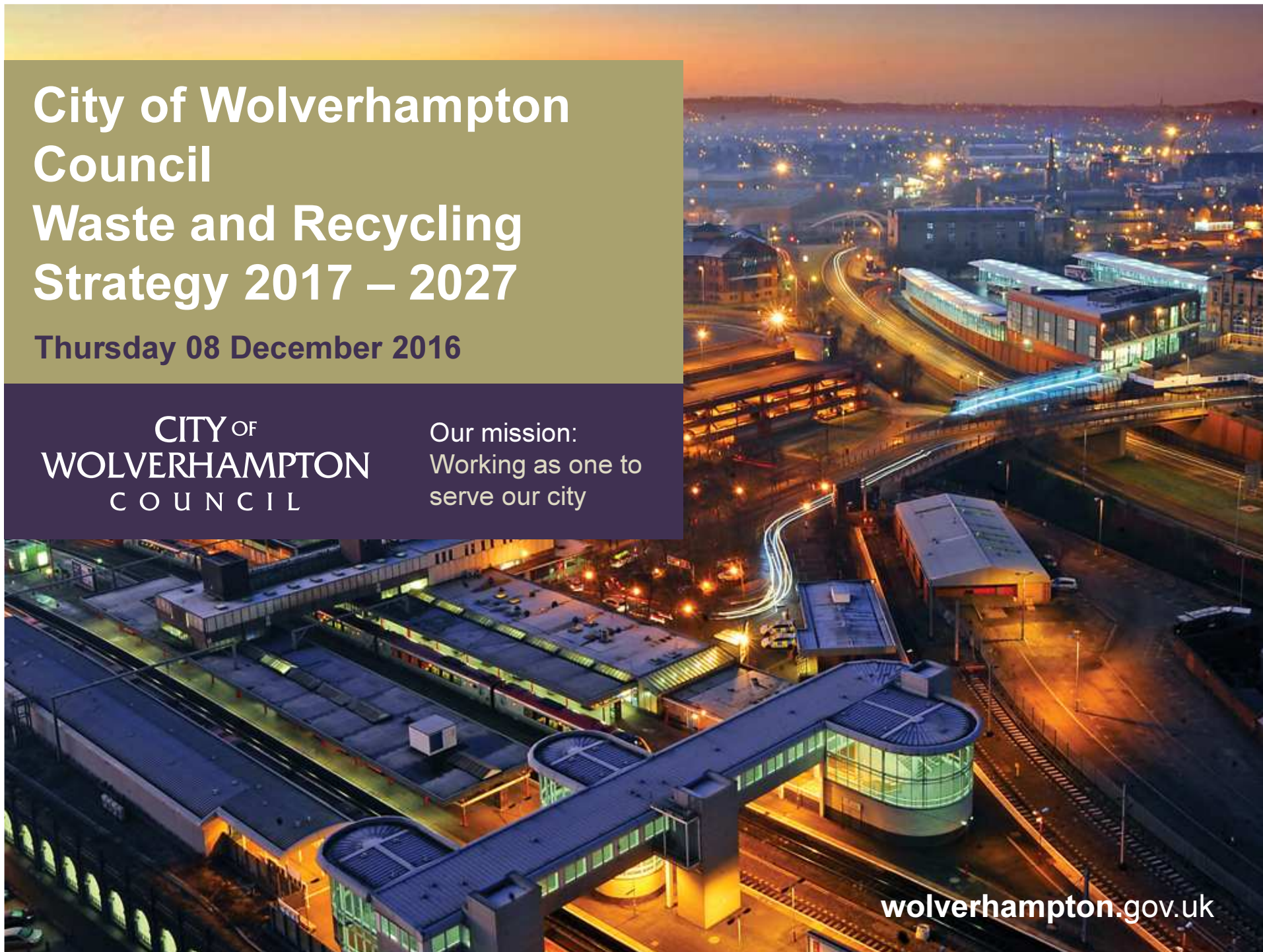
# City of Wolverhampton Council Waste and Recycling Strategy 2017 – 2027

Thursday 08 December 2016

CITY OF  
WOLVERHAMPTON  
COUNCIL

Our mission:  
Working as one to  
serve our city

[wolverhampton.gov.uk](http://wolverhampton.gov.uk)



# **Waste and Recycling Strategy**

**Councillor Steve Evans**

Cabinet Member for Environment

**Ross Cook**

Service Director – City Environment

**Andy Jervis**

Head of Public Protection

**Steve Perkins**

Waste & Recycling Services

# Introduction

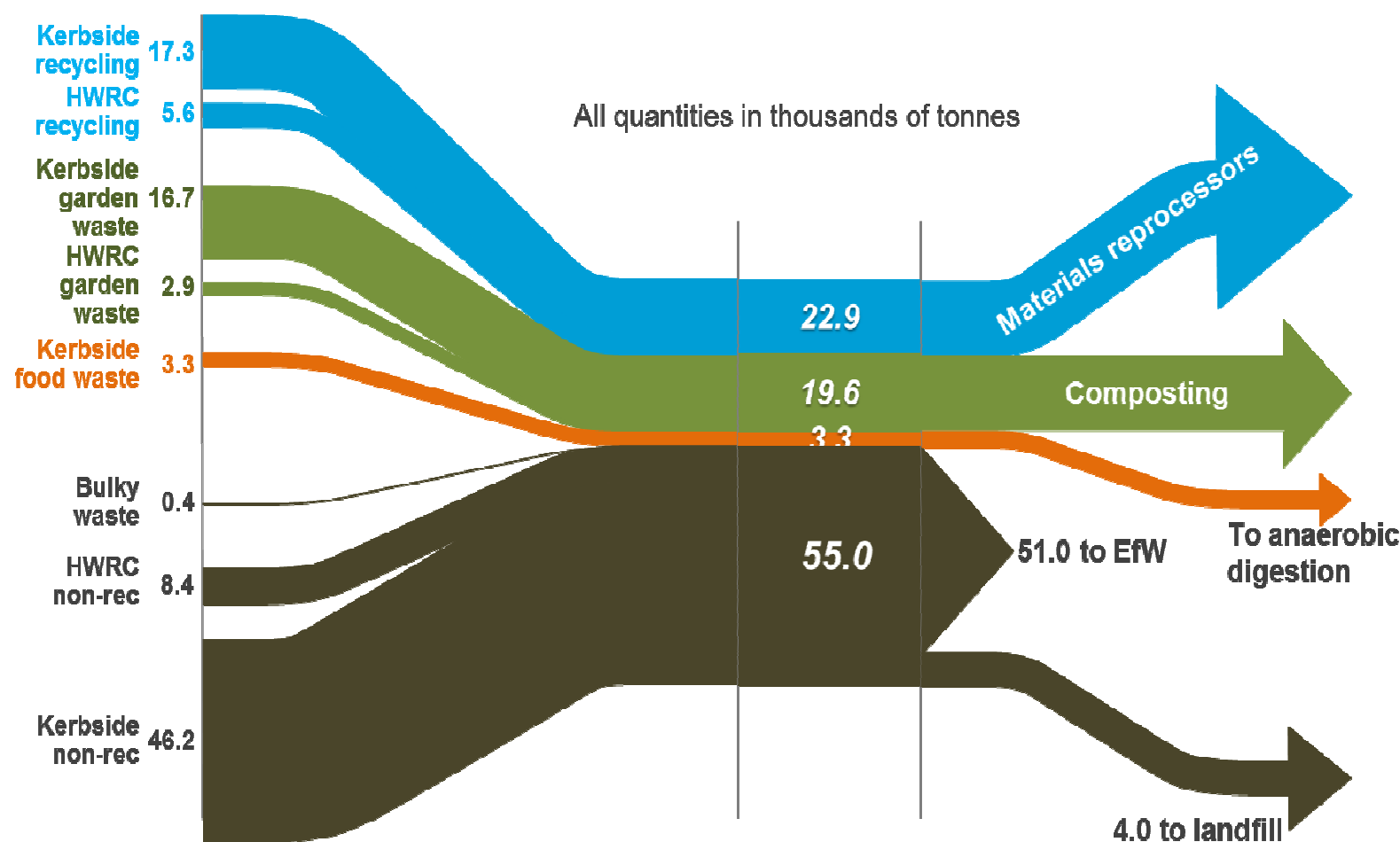
To present to the Scrutiny Panel:

- A summary of the work to develop a new Waste Management Strategy
- Proposals to deliver the Waste & Recycling Services, to achieve the previously agreed savings of £1.7 million in the Medium Term Financial Strategy (MTFS); and
- Further alternatives for consideration to deliver the additional savings of £1.2 million subject to consultation.

# Current Service

Waste Stream	Non-recyclable waste	Recycling	Garden waste	Food waste	HWRCs
Container	 140 litre capacity	 240 litre capacity	 240 litre capacity		
Collection frequency	Weekly	Fortnightly	Fortnightly April – November	Weekly	N/A
Materials collected					

# The flows of the City's household waste to its end destinations



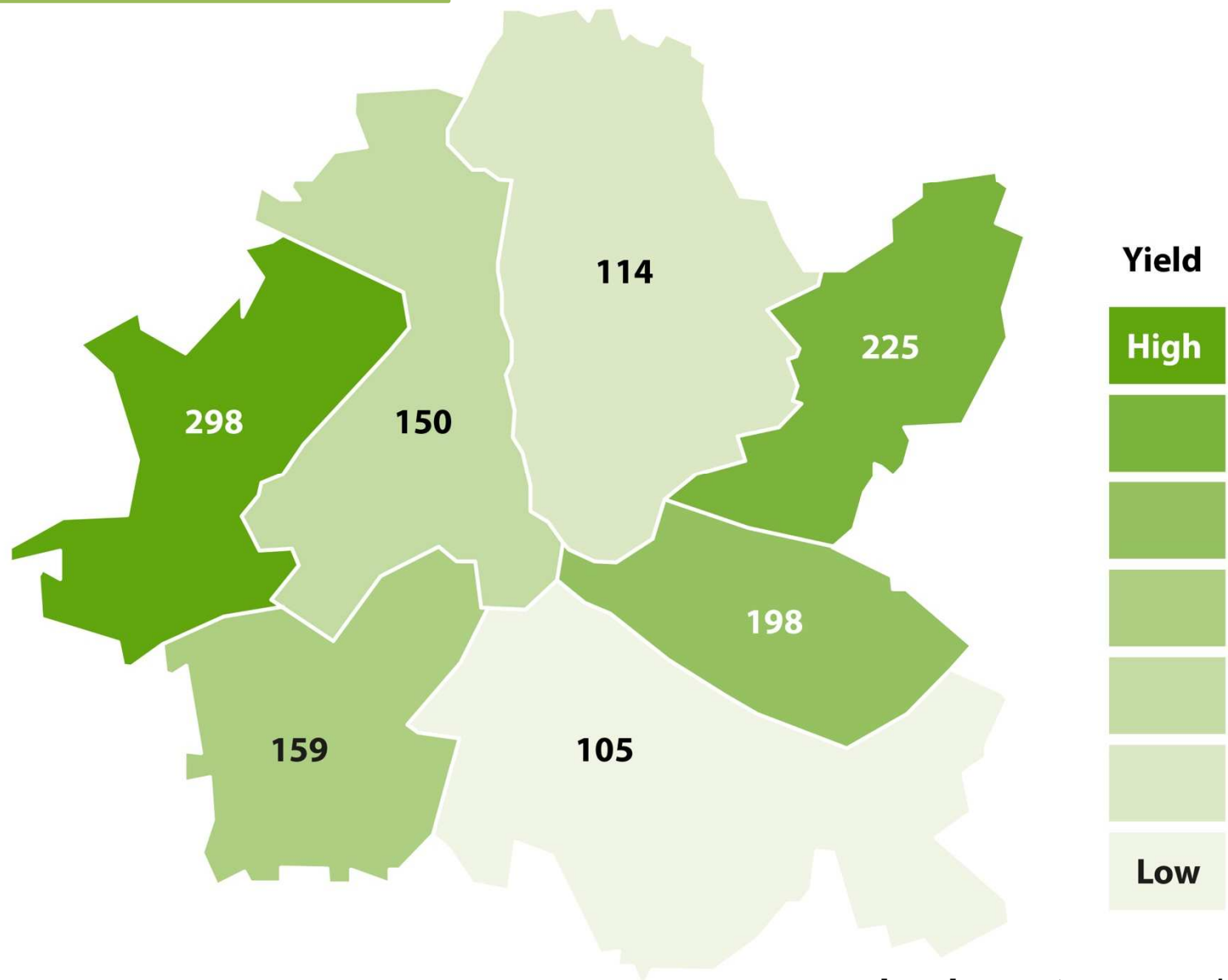
Waste source

Waste destinations

[wolverhampton.gov.uk](http://wolverhampton.gov.uk)



**Garden waste yields – kg/homes/year**



# Comparative Collection & Disposal

Type of Waste	Annual Tonnes	Disposal Cost per tonne £	Disposal Cost £000	Collection Cost £000	Total Cost £000
<b>Residual or Refuse bin waste</b>	55,000	56	3,000	3,500	6,500 (£118/T)
<b>+ Food</b>	3,000	41	120	500	620 (£206/T)
<b>Recycling</b>	23,000	15	300	2,300	2,600 (£113/T)
<b>Garden</b>	20,000	23	400	1,200	1,600 (£80/T)

# National Drivers for Change

## Key considerations:

- Pushing waste up the waste hierarchy –  
– reducing - reusing – recycling
- Promoting better quality recyclates for collection
- The national recycling target of 50% by 2020
- Our current recycling performance 48% (July 2016)
- Nationally moving to fortnightly/longer residual collections (76%)
- 44% English councils now charge for garden waste collections



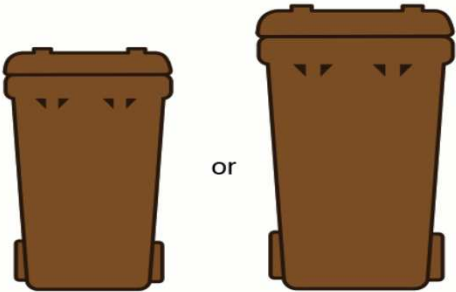





# Local Drivers for Change (1)

- Reduced budgetary provision (required savings)
- End of weekly waste collection grant (April 2017)
- Economic regeneration and home building across Wolverhampton (more users of the services)
- More transient and diverse population
- Local / Regional move to fortnightly residual collections (73% in West Midlands)

## Local Drivers for Change (2)

- Desire to deliver high quality services – both kerbside and at the Household Waste Recycling Centres
- Better use of technology / Apps (notifications)
- Improving the street scene (fewer bins)
- Adapting to changing consumer habits i.e. less paper/more cardboard & plastics

# Revised Service Proposal

Waste Stream	Non-recyclable waste	Recycling	Garden waste
Container	 <p>140 litre capacity      240 litre capacity</p>	 <p>240 litre capacity</p>	 <p>240 litre capacity</p>
Collection frequency	Fortnightly	Fortnightly	40 weeks
Materials collected			

# Recycling Centre / Super Site



# Residual Waste Proposal

- A reminder 76 % of all local authorities operate a fortnightly or three/four weekly collection service already (73 % in the West Midlands)
- No bin swaps required
- No bin cleaning necessary
- Positive impact on recycling rates
- Households will have the option of a free larger 240L brown bin

# Garden Waste Proposal

- Households receiving full housing benefit / council tax support **no charge**
- Households receiving partial housing benefit / council tax support **£17.50 (50% discount)**
- Eligibility to be assessed annually
- All other households **£35**
- Annual payment preferably by direct debit



# Garden Waste Proposal (cont.)

- Households need to request service and will receive a pre-printed sticker with their address to put on their green bin
- Based on an extended collection period of 42 weeks from the end of February to early December
- 44 % of English local authorities currently charge for the collection of garden waste and many more currently considering this
- The majority of charges are between £35 and £65
- 1st payment to cover 2017/18 to January 2019

# Key Benefits of alternative service configuration

- A decrease in the number of unused / contaminated bins on streets
- Removal of the unpopular and expensive food waste service
- Garden Waste service extended up to 42 weeks pa
- Provision of a new recycling centre / super site with improved access, opening times and Re-Use Shop (to achieve the £500K “Depot Rationalisation” saving) to be located centrally and open from 2018/19
- Targeted services and support in specific communities

# Transformation Actions

- Extended opening hours of the current recycling centres
- Purchase of additional bins
- Setting up an Transformation Assistance team to ensure streets are “clean” after collections
- Resources to help households to recycle more (education)
- Appointment of an engagement team to consult and design appropriate bespoke services for vulnerable groups and neighbourhoods
- Introductory offer for the Garden Waste Service

# To sum up...

- New services aligned to national and local trend

Proposal	Potential Saving
Fortnightly collections and stop food collections	£1.4 million
Introduce Garden Waste charges	£1.0 million
New Recycling Centre / Super Site	£0.5 million

**Thank You**  
**Any Questions?**

**[wolverhampton.gov.uk](http://wolverhampton.gov.uk)**